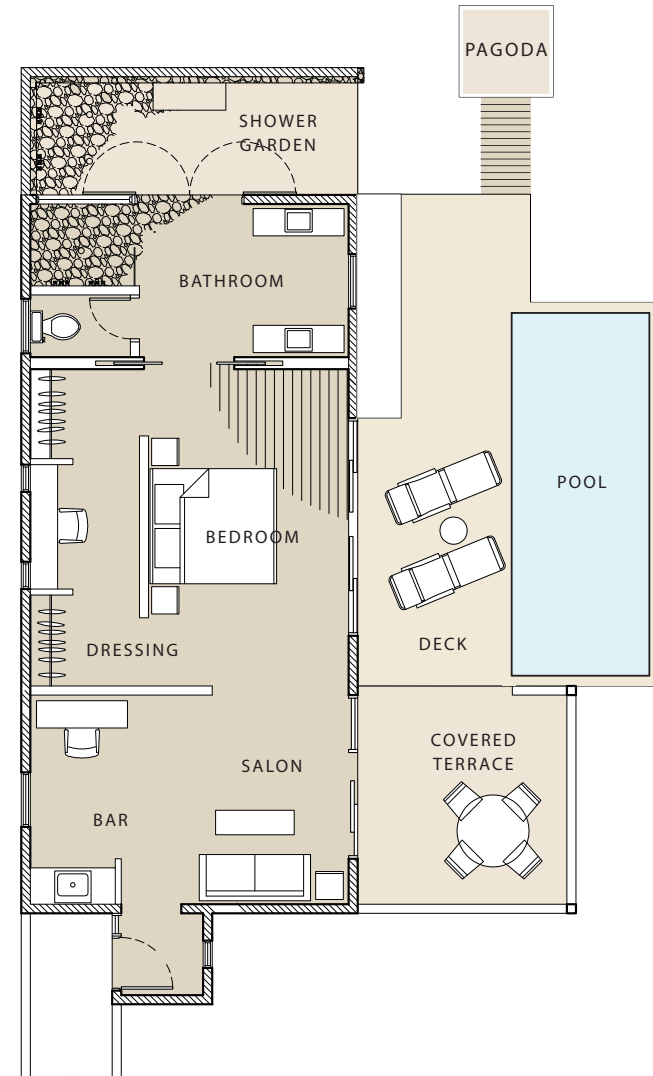


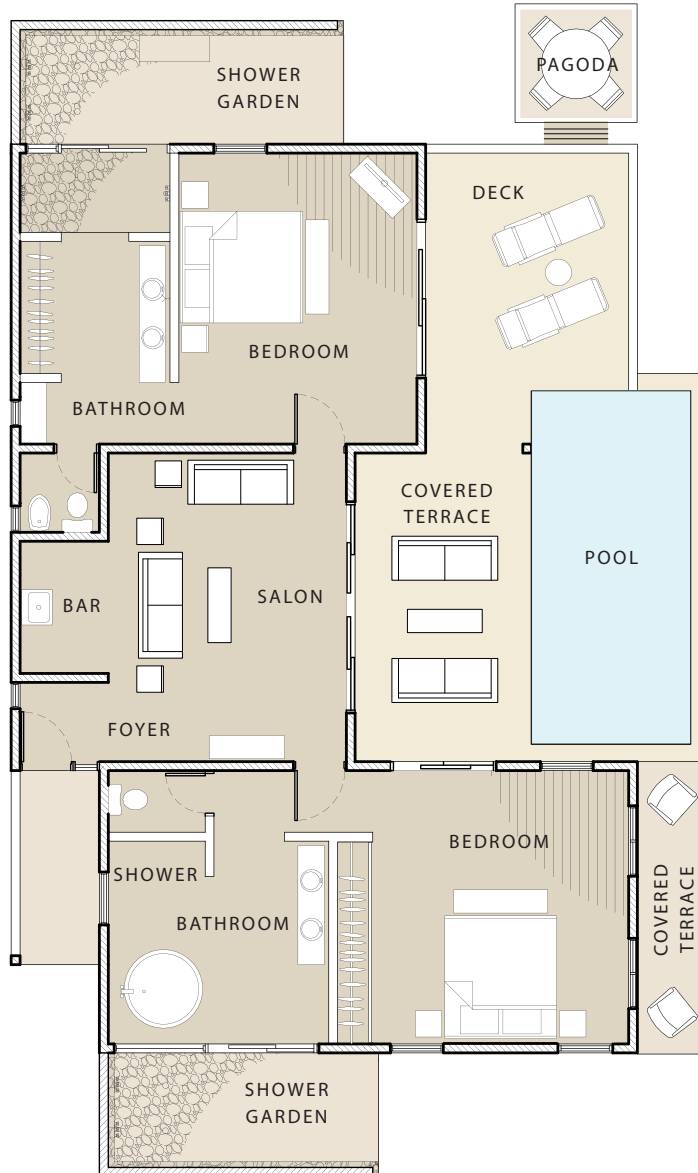
# ONE-BEDROOM VILLA

*Papaya*  
HOTEL & SPA | ANTIGUA



		ft <sup>2</sup>	m <sup>2</sup>
Foyer	4'6 x 4'6	20	2
Bedroom	17'6 x 17'5	305	28
Salon	17'6 x 11'6	201	18
Bathroom	17'6 x 8'5	147	14
Shower Garden	17'8 x 6'2	109	10
Covered Terrace	12 x 12'6	150	14
Uncovered Terrace	9' x 27'	297	22.5
Pool	9' x 27'	297	22.5
Pagoda	9' x 9'	81	7.5
<b>Total Interior</b>		<b>673</b>	<b>63</b>
<b>Total Exterior</b>		<b>934</b>	<b>76.5</b>
<b>Grand Total</b>		<b>1607</b>	<b>139.5</b>

# TWO-BEDROOM VILLA



		ft <sup>2</sup>	m <sup>2</sup>
Bedroom One	14'6 x 15'6	225	21
Bathroom	15'6 x 14	217	20
Shower Garden	15' x 6'2 93	9	
Salon	13'6 x 17'6	236	22
Kitchen	5' x 7'6 38	4	
Bedroom Two	13'6 x 16'6	223	21
Bathroom	8'6 x 16' 136	13	
WC	5 x 4'6	20	2
Shower Garden	18' x 16'2	111	10
Covered Terrace	18' x 6'2 176	16.5	
Uncovered Terrace*		299	28
Pool	9' x 35' 315	29	
Pagoda	9' x 9'	81	7.5
Total Interior		1118	104
Total Exterior		982	91
<b>Grand Total</b>		<b>2100</b>	<b>195</b>

\*Measurements vary